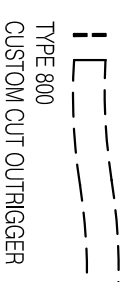
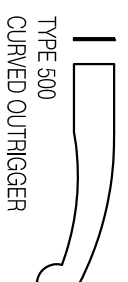
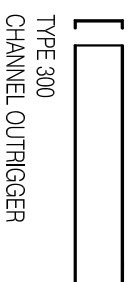
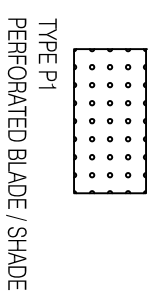
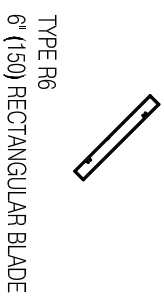
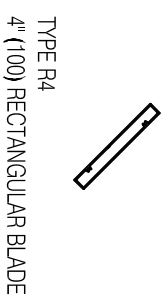
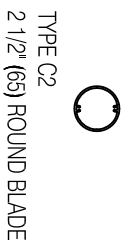
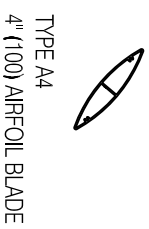
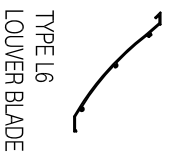


**BLADES TYPES**

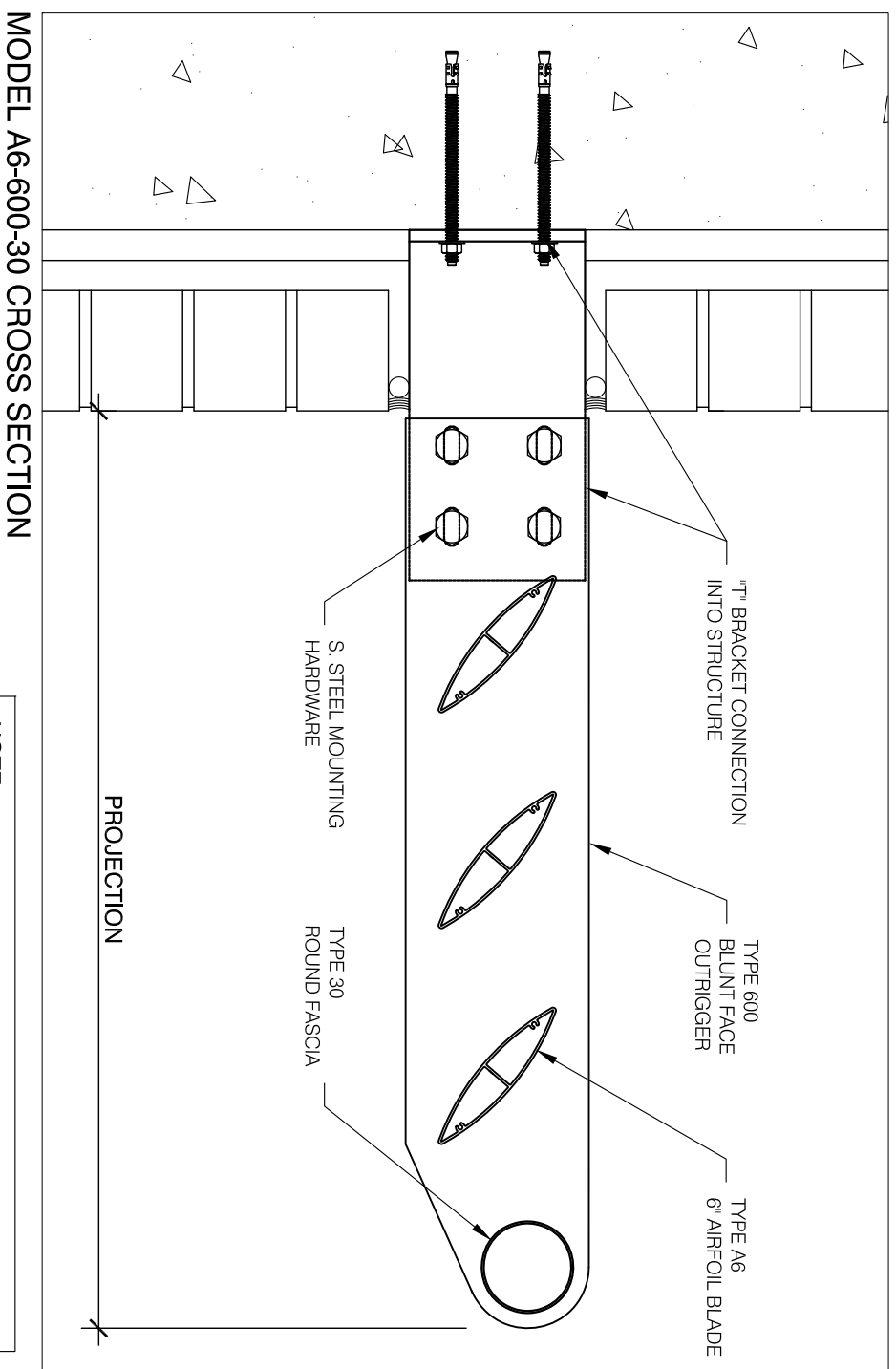


**OUTRIGGER TYPES**

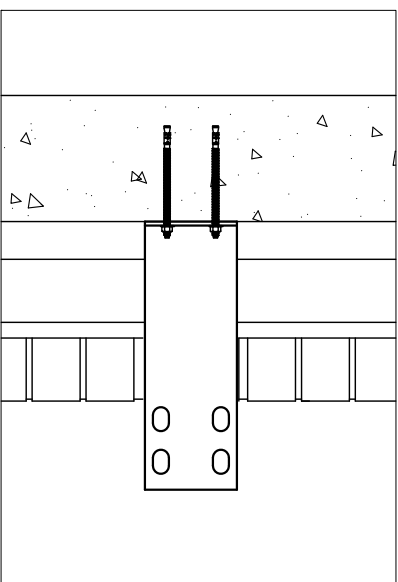
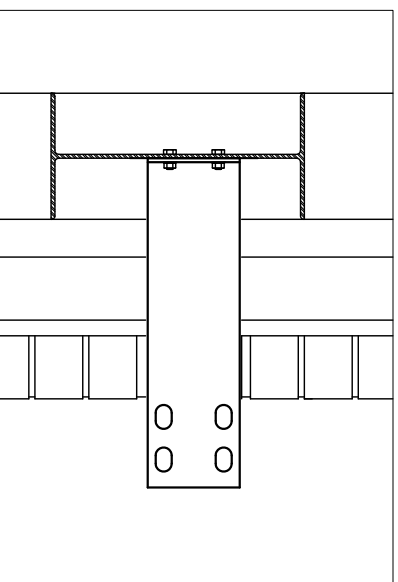
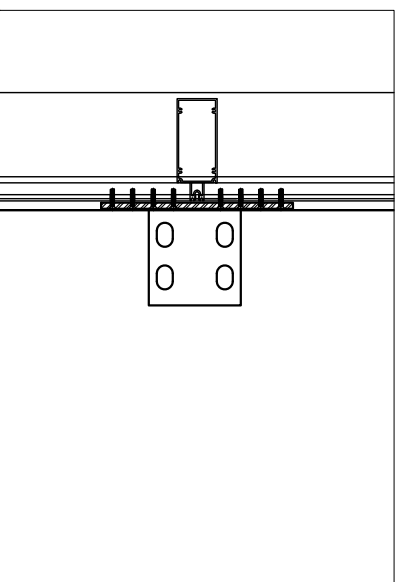
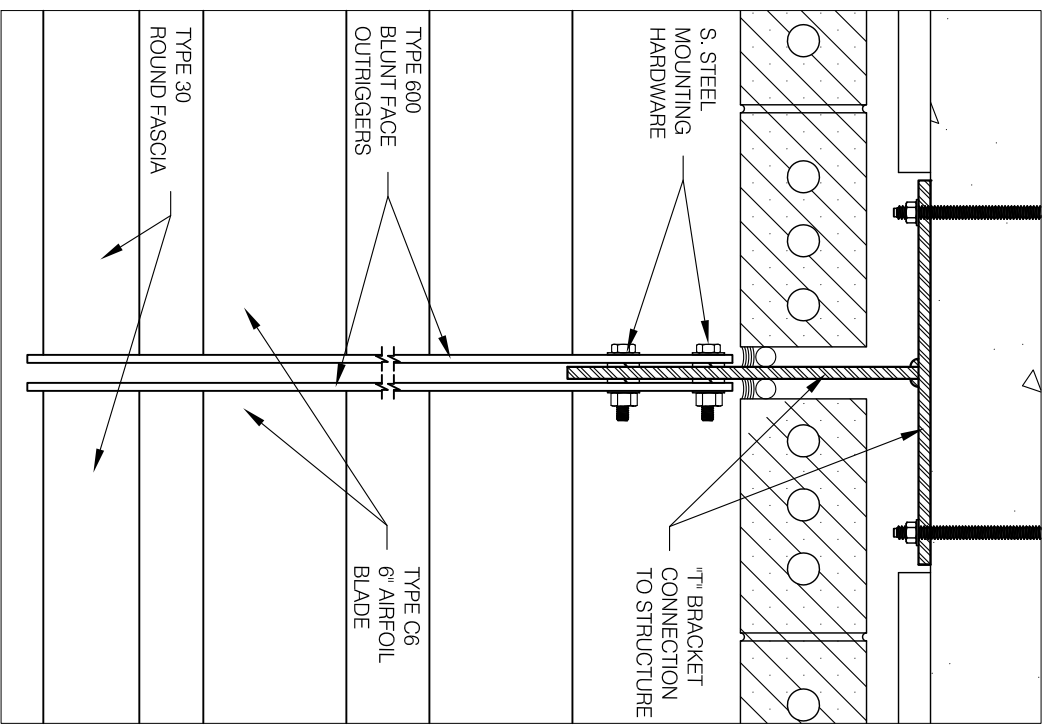
**FASCIA TYPES**



OUTRIGGER TYPE  
BLADE TYPE  
FASCIA TYPE  
**MODEL A6-600-30**



**NOTE:**  
THE CONNECTION DETAILS HEREIN ARE EXAMPLES.  
ALL CONNECTIONS ARE DESIGNED AND ENGINEERED  
TO PROJECT CONDITIONS



**SUNSHADE MODEL**  
A6-600-30

EXTRUDED ALUMINUM  
6" AIRFOIL BLADES, FLAT  
ALUMINUM BLUNT FACE  
OUTRIGGERS AND 4" Ø ROUND  
FASCIA.

SUNSHADE SECTIONS TO BE  
ANCHORED INTO STRUCTURE  
WITH ALUMINUM 7" MOUNTING  
BRACKETS.  
ANCHORING HARDWARE  
SHALL BE S. STEEL.

ALL COMPONENTS TO BE  
PAINTED OR ANODIZED FINISH  
TO CONSULTANT'S  
SPECIFICATIONS.

general notes

no.	description	date



**TENPLUS**  
ARCHITECTURAL PRODUCTS LTD  
26 - 6535 MILLCREEK DRIVE  
MISSISSAUGA, ON L5N 2M2  
TEL: 905-363-2306  
FAX: 905-363-2309  
www.tenplus-online.com

project:  
spec section:  
customer:  
architect:  
ten plus representative:

drawing:  
**SUNSHADE MODEL**  
A6-600-30

scale:  
date:  
drawn by:  
checked by:  
TEN PLUS

sheet no. project no.  
**TP1**