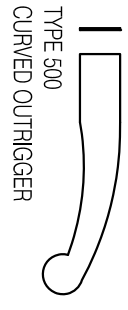
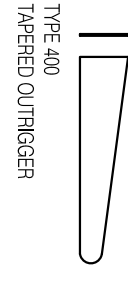
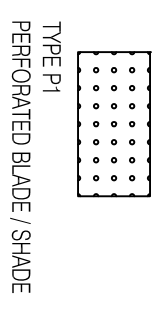
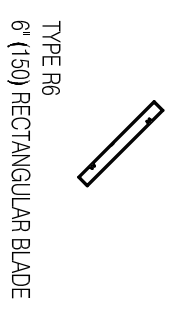
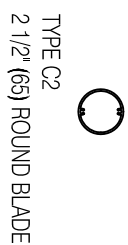
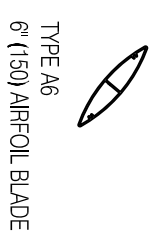
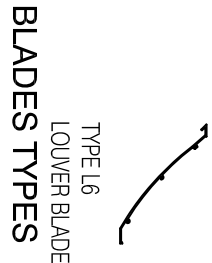


**SUNSHADE MODEL
AG-200-40**

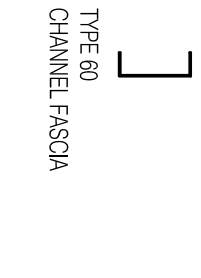
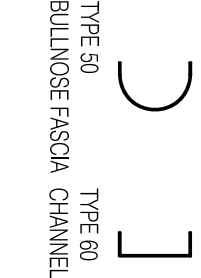
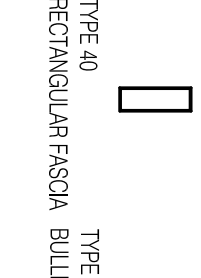
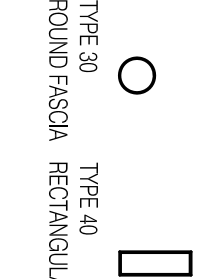
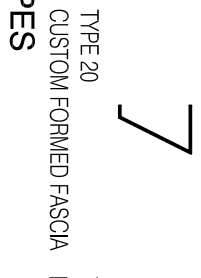
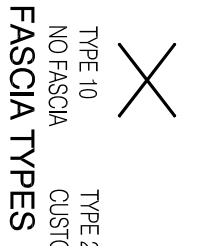
EXTRUDED ALUMINUM
6" AIRFOIL BLADES, FLAT
ALUMINUM STRAIGHT FACE
OUTRIGGERS AND A
RECTANGULAR FASCIA.

SUNSHADE SECTIONS TO BE
ANCHORED INTO STRUCTURE
WITH ALUMINUM™
MOUNTING BRACKETS.
ANCHORING HARDWARE
SHALL BE S. STEEL.

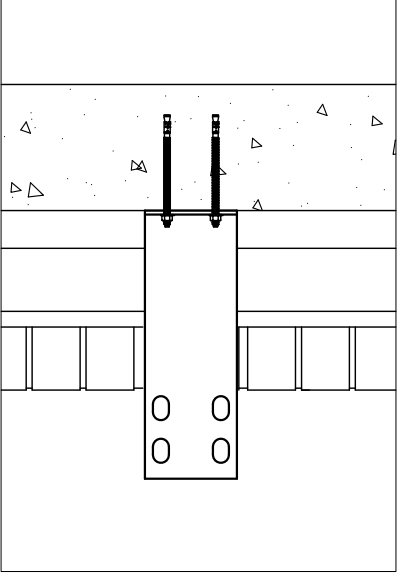
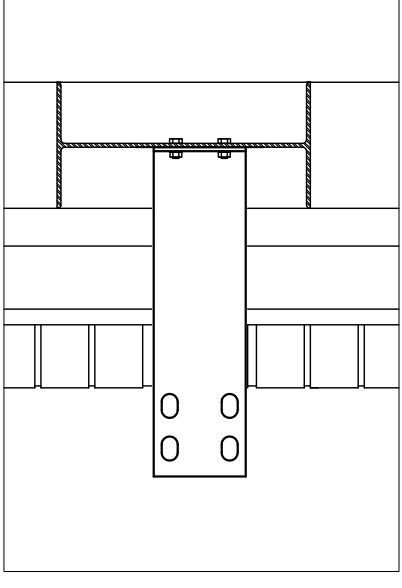
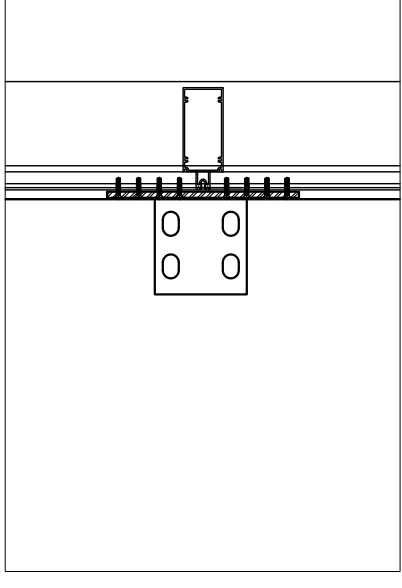
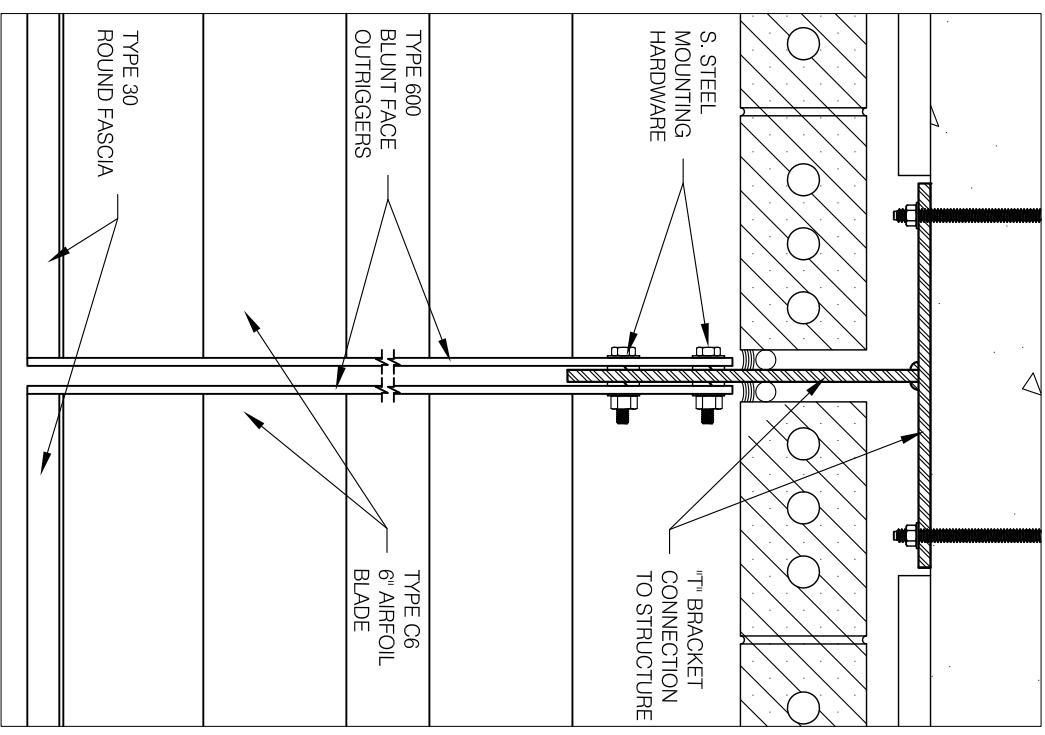
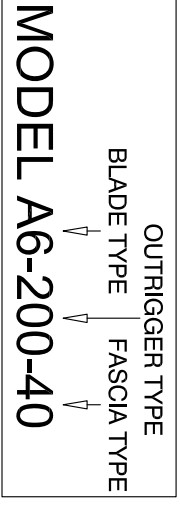
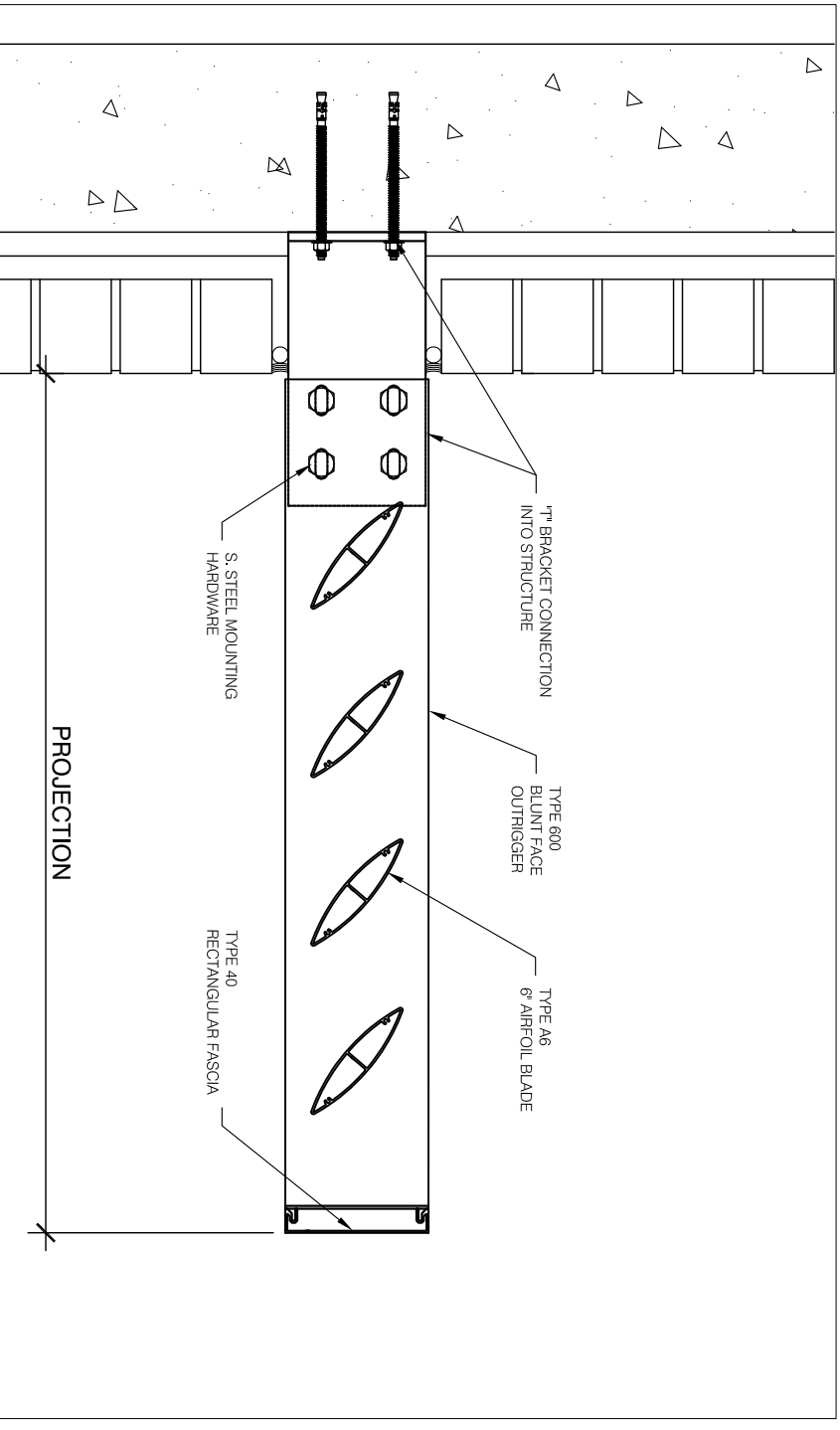
ALL COMPONENTS TO BE
PAINTED OR ANODIZED FINISH
TO CONSULTANT'S
SPECIFICATIONS.



OUTRIGGER TYPES



FASCIA TYPES



general notes	
no.	description
revisions:	date
<p>TENPLUS ARCHITECTURAL PRODUCTS LTD 26 - 6535 MILLCREEK DRIVE MISSISSAUGA, ON L5N 2M2 TEL: 905-363-2306 FAX: 905-363-2309 www.tenplus-online.com</p>	
project:	
spec section:	
customer:	
architect:	
ten plus representative:	
scale:	
date:	
drawn by:	TEN PLUS
checked by:	
sheet no.	project no.
TP1	

drawing:
**SUNSHADE MODEL
AG-200-40**