

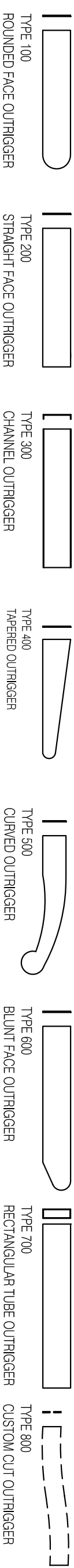
**SUNSHADE MODEL
A6-200-40**

EXTRUDED ALUMINUM
6" RECTANGULAR TUBE
BLADES, FLAT ALUMINUM
STRAIGHT FACE OUTRIGGERS
AND RECTANGULAR FASCIA.
SUNSHADE SECTIONS TO BE
ANCHORED INTO STRUCTURE
WITH ALUMINUM "T"
MOUNTING BRACKETS.
ANCHORING HARDWARE
SHALL BE S. STEEL.
ALL COMPONENTS TO BE
PAINTED OR ANODIZED FINISH
TO CONSULTANT'S
SPECIFICATIONS.

BLADES TYPES



OUTRIGGER TYPES

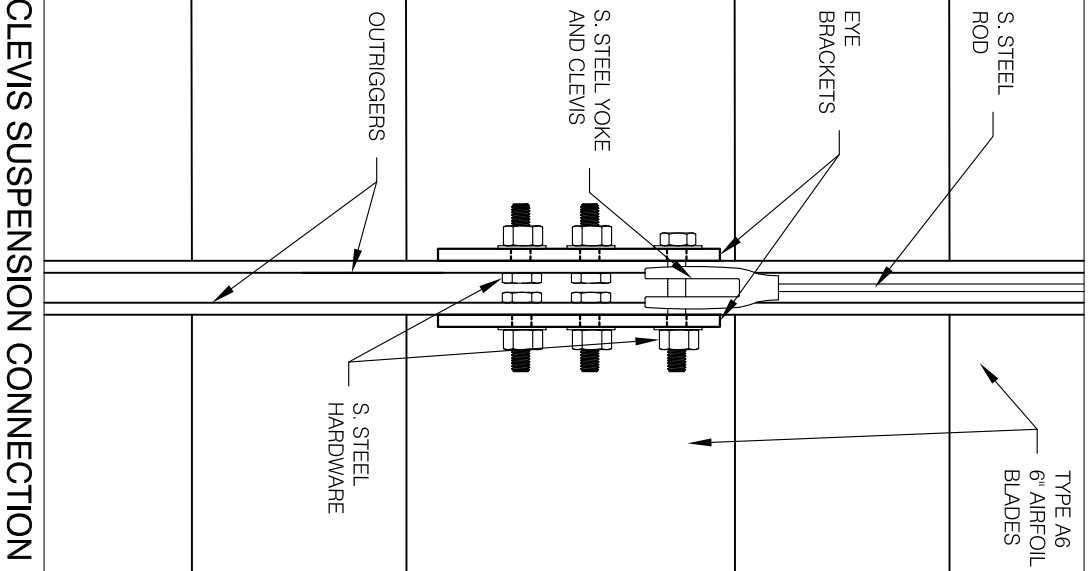
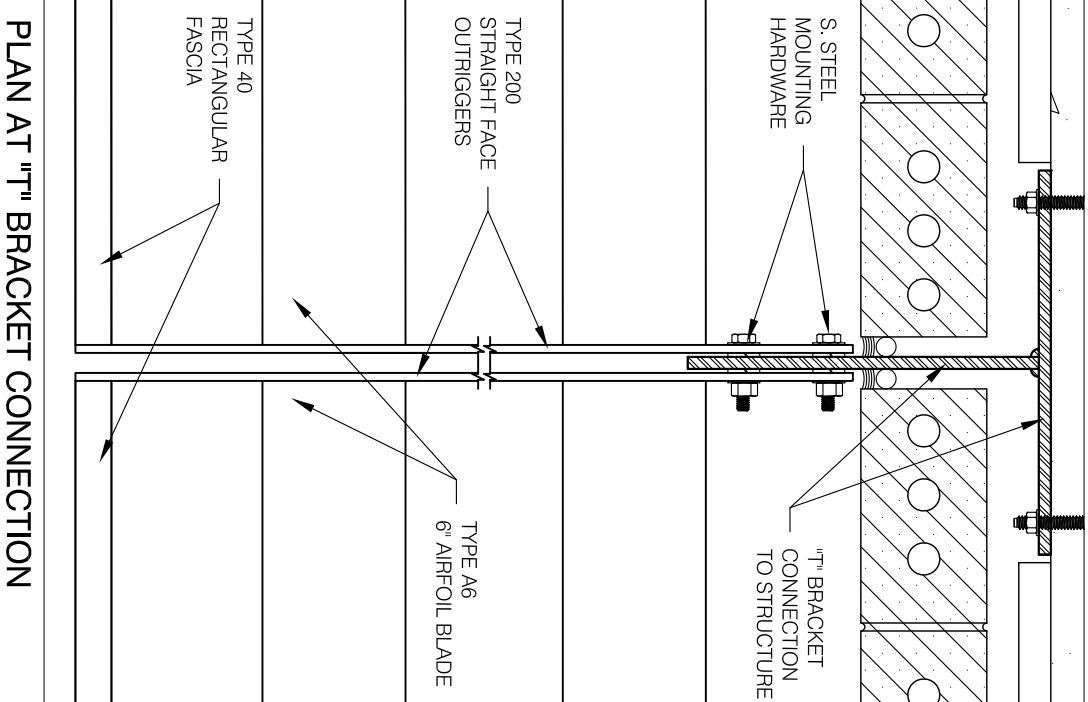
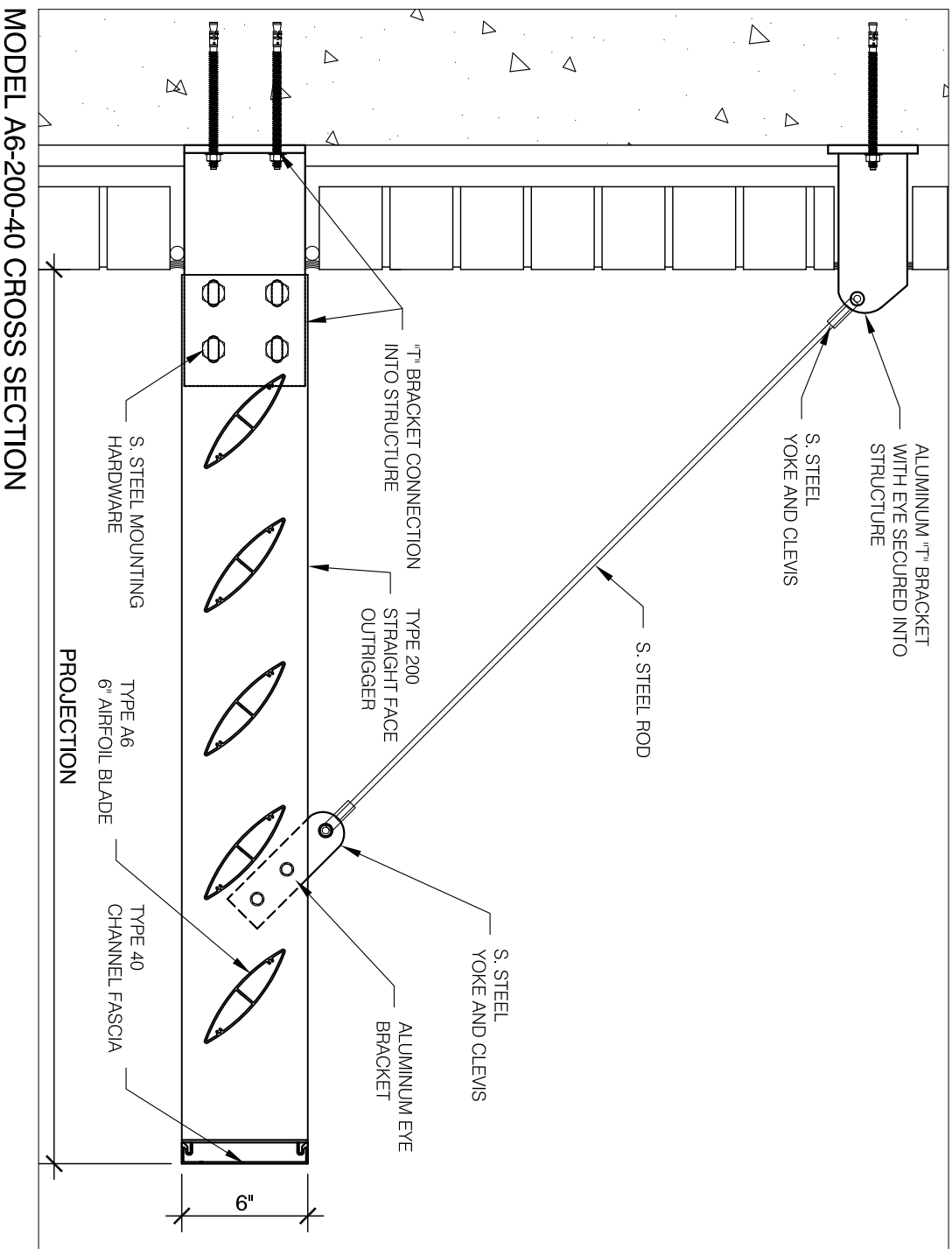


FASCIA TYPES



OUTRIGGER TYPE | BLADE TYPE | FASCIA TYPE
MODEL A6-200-40

NOTE:
THE CONNECTION DETAILS HEREIN ARE EXAMPLES.
ALL CONNECTIONS ARE DESIGNED AND ENGINEERED
TO PROJECT CONDITIONS



general notes	
no.	description
revisions:	date
project:	
spec section:	
customer:	
architect:	
ten plus representative:	
<p>26 - 6535 MILLCREEK DRIVE MISSISSAUGA, ON L5N 2M2 TEL: 905-363-2306 FAX: 905-363-2309 www.tenplus-online.com</p>	
<p>drawing: SUNSHADE MODEL A6-200-40</p>	
scale:	project no.
date:	sheet no.
drawn by: TEN PLUS	TP1
checked by:	