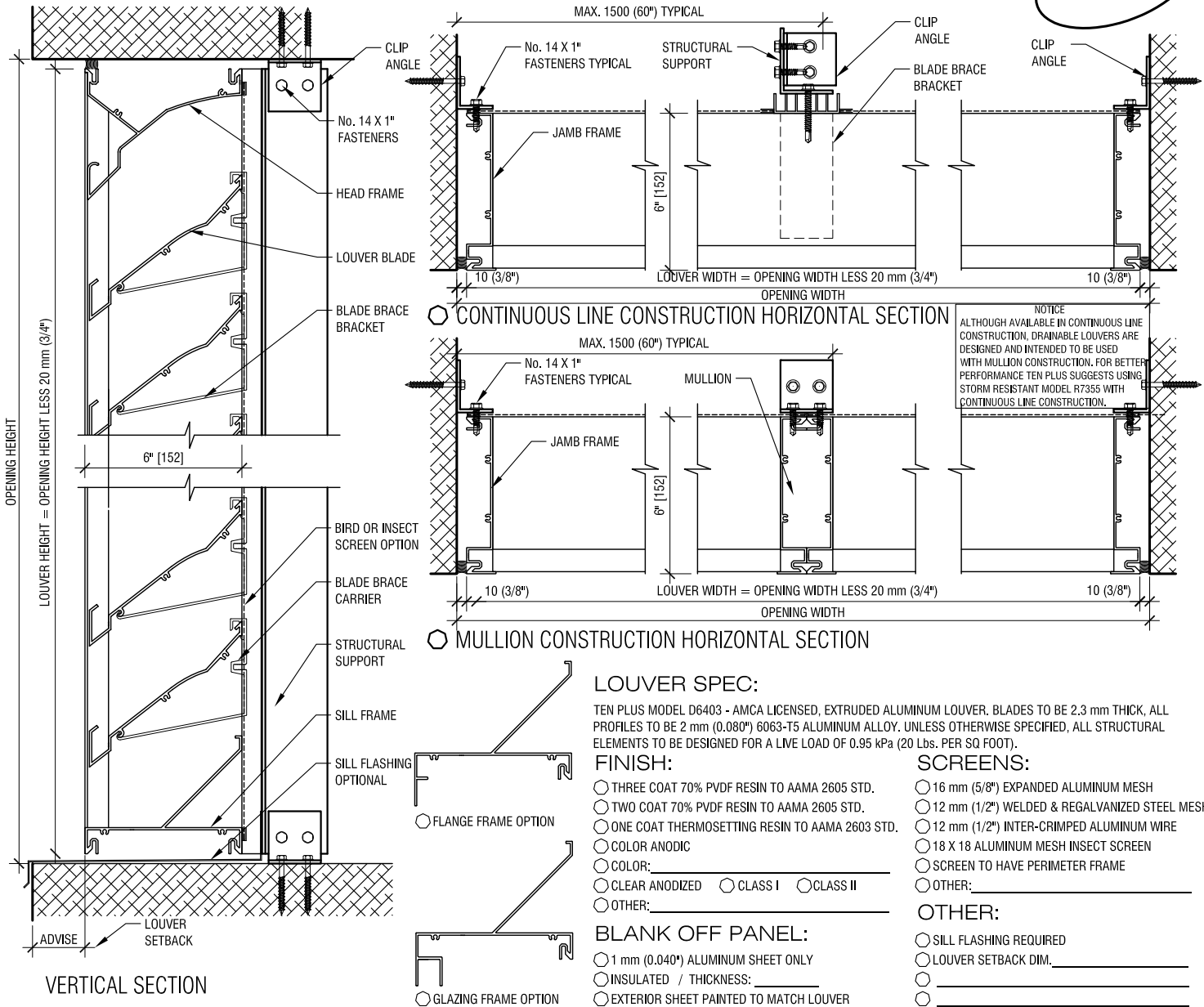


TEN PLUS DRAINABLE BLADE LOUVER MODEL D6403

PAGE: OF



LOUVER SPEC:

TEN PLUS MODEL D6403 - AMCA LICENSED, EXTRUDED ALUMINUM LOUVER. BLADES TO BE 2.3 mm THICK, ALL PROFILES TO BE 2 mm (0.080") 6063-T5 ALUMINUM ALLOY. UNLESS OTHERWISE SPECIFIED, ALL STRUCTURAL ELEMENTS TO BE DESIGNED FOR A LIVE LOAD OF 0.95 kPa (20 Lbs. PER SQ FOOT).

FINISH:

- THREE COAT 70% PVDF RESIN TO AAMA 2605 STD.
- TWO COAT 70% PVDF RESIN TO AAMA 2605 STD.
- ONE COAT THERMOSETTING RESIN TO AAMA 2603 STD.
- COLOR ANODIC
- COLOR: _____
- CLEAR ANODIZED CLASS I CLASS II
- OTHER: _____

SCREENS:

- 16 mm (5/8") EXPANDED ALUMINUM MESH
- 12 mm (1/2") WELDED & REGALVANIZED STEEL MESH
- 12 mm (1/2") INTER-CRIMPED ALUMINUM WIRE
- 18 X 18 ALUMINUM MESH INSECT SCREEN
- SCREEN TO HAVE PERIMETER FRAME
- OTHER: _____

BLANK OFF PANEL:

- 1 mm (0.040") ALUMINUM SHEET ONLY
- INSULATED / THICKNESS: _____
- EXTERIOR SHEET PAINTED TO MATCH LOUVER

OTHER:

- SILL FLASHING REQUIRED
- LOUVER SETBACK DIM. _____
- _____
- _____

NOTE: SOME OPTIONS MAY LEAD TO EXTRA COSTS TO THE CONTRACT. ENQUIRE WITH YOUR REP.

| REF. | QTY. | DESIGN OPENING WIDTH | DESIGN OPENING HEIGHT | NUMBER OF STRUCTURALS (MULLIONS) | LOUVER LOCATION | FIELD OPENING WIDTH | FIELD OPENING HEIGHT | NOTES |
|------|------|----------------------|-----------------------|----------------------------------|-----------------|---------------------|----------------------|-------|
| | | | | | | | | |
| | | | | | | | | |
| | | | | | | | | |
| | | | | | | | | |
| | | | | | | | | |
| | | | | | | | | |
| | | | | | | | | |
| | | | | | | | | |
| | | | | | | | | |
| | | | | | | | | |



26 - 6535 MILLCREEK DRIVE
 MISSISSAUGA, ON L5N 2M2
 TEL: 905-363-2306
 FAX: 905-363-2309
 WWW.TENPLUS-ONLINE.COM

| | |
|-----------------|--------------|
| PROJECT: | DATE: |
| CUSTOMER: | DRAWN BY: |
| CONSULTANT: | REVISION: |
| REPRESENTATIVE: | PROJECT No.: |